



AUCTION

LEADING THE INDUSTRY SINCE 1945

MONDAY – OCTOBER 2, 2017 – 6:00 PM

12 Acres Wooded Land – Pond – Quonset Barn

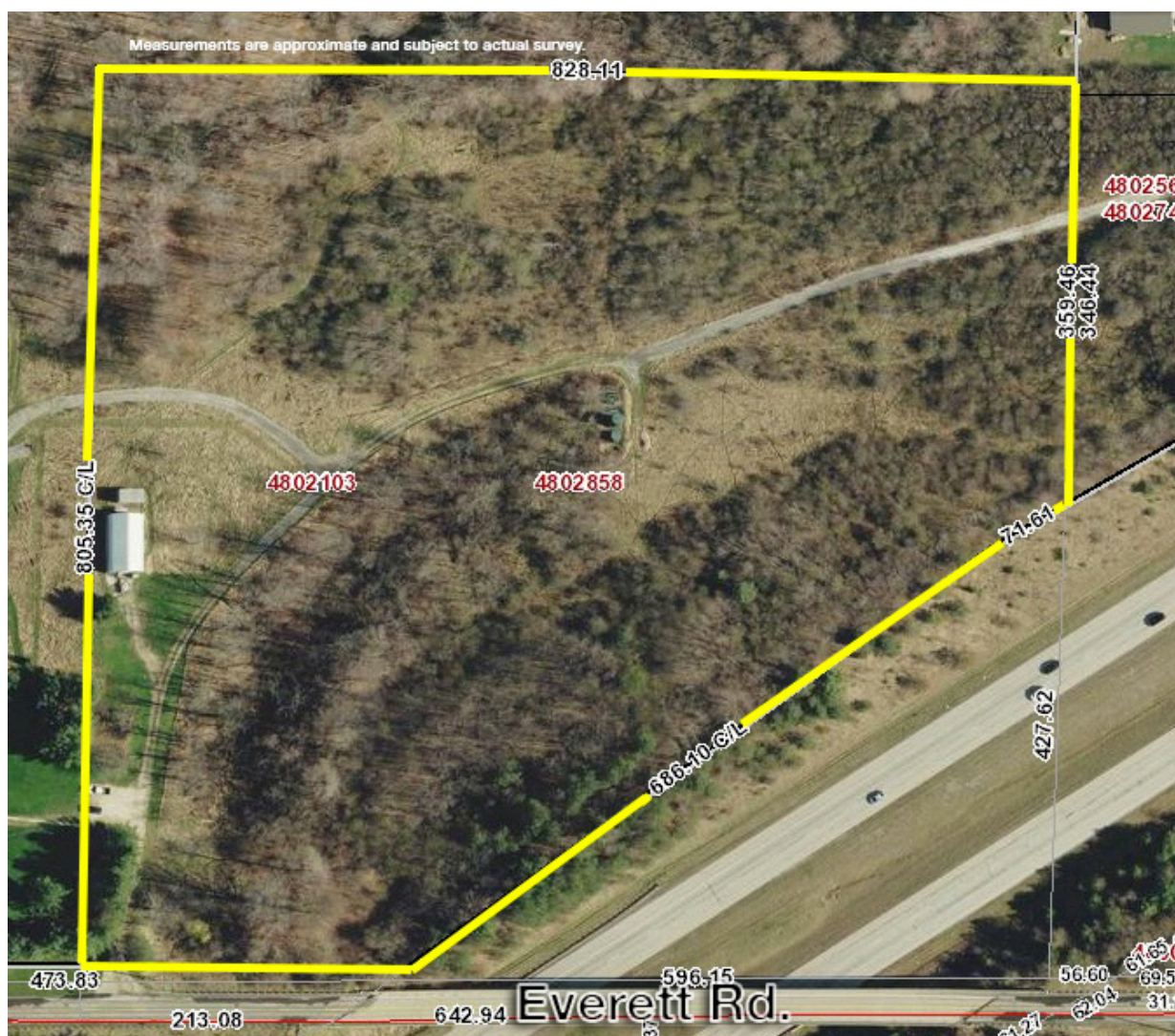
RICHFIELD TWP. – SUMMIT COUNTY, OH – REVERE LSD

ABSOLUTE AUCTION, All sells to highest bidder on location:

EVERETT RD., RICHFIELD, OH 44286

Directions: Take SR 303 west of Richfield to Medina Line Rd. and go south to Everett Rd. and west to auction.

Watch for KIKO signs.



Information is believed to be accurate but not guaranteed.



330.455.9357 • kikoauctions.com



12.06 acres. Approx. 213' of frontage on Everett Rd. Existing oil well drive. Nice 1,440 sq. ft. Quonset-style steel building, built in 2012 with overhead door, concrete floor, and electric. Pond to rear. Several nice building spots. Perk tests completed. (Note: If you wish to build a home behind the Quonset barn you'll need to move it). Revere Local Schools. Taxes are currently \$1,300.05 per half year. Walk this land at your convenience. Maps available at www.kikoauctions.com.

TERMS ON REAL ESTATE: 10% down auction day, balance due at closing. A 10% buyer's premium will be added to the highest bid to establish the purchase price, which goes to the seller. Any desired inspections must be made prior to bidding. All information contained herein was derived from sources believed to be correct. Information is believed to be accurate but not guaranteed.

AUCTION BY ORDER OF: Theodore A. Myers

AUCTIONEER/REALTOR: Matthew P. Kiko, AARE, 330-327-9617 or mattkiko@kikocompany.com



330.455.9357 • kikoauctions.com

